

1. SPECIFICATION

1.1 PRESS 본체

Specification

PRODUCTION ENGINEERING STANDARD					
SPECIFICATION FOR 2000TON FREE FORGING PRESS					
NO	DESCRIPTION		UNIT	SPECIFICATION	REMARK
1	MAIN CYLINDER CAPACITY	PRESSING	ton	2000	
		LIFTING	ton	60	
2	MAIN CYLINDER STROKE		mm	1800	
3	OPEN HEIGHT		mm	2300	
4	SPEED	DOWN	mm/sec	MAX 250	
		PRESSING	mm/sec	MAX 50	at 2000TON
		UP	mm/sec	MAX 250	
5	SLIDE TABLE SIZE		mm	1800 × 1800	
6	BOLSTER TABLE SIZE		mm	1800 × 1800	
7	BOLSTER TURNING TABLE SIZE		mm	Ø1700 × 360°x 1EA	
8	MAIN PUMP		-	PVV540 × 4台	Maker : Oilgear
9	HYDRAULIC MOTOR		-	JRC-1500 x 1台	
10	MAIN ELEC. MOTOR		-	300HP x 6P x 3.3KV x 4台	현대
11	MAIN CYLINDER RAM DIA		MM	1020	
12	WORKING PRESSURE		kg/cm ²	245	
13	OIL TANK		Liter	11000	55-Draw
14	NOISE LEVEL		dB(A)	90 以下	at no load
15	FRAME 제작 TYPE		-	4주식	
16	OPERATING METHOD			MANUAL/SEMI AUTO	
17	FORGING TOLERANCE			± 1mm	
18	CONTROL METHOD			HYDRAULIC CONTROL	

☐ REMARK

1. 모든 CAPACITY는 각 CYL'D 단면적에 압력을 곱한 이론값이며 금형을 포함한 각종의

자체무게(SLIDE, RAM 등)와 PACKING의 마찰저항, 배관 저항 등은 고려되어 있지 않습니다.

2. NOISE LEVEL의 측정 조건은 OPERATION PANEL 앞 1M, FL상 1.5M에서 측정하여 무부하 연속음 기준입니다.

2. 주요 부속품

2.1 기계 부속품

번호	항 목	사 양 / 형 식	수량	비 고
1	압력 조정 장치	RELIEF VALVE	1式	
2	OIL TANK	11000 Liter	1式	
3	OIL COOLER	WATER COOLER ✓	1式	
4	OIL LEVEL GAGE	UO TYPE	1式	
5	OIL THERMOMETER	0 - 100 C°	1式	
6	AIR FILTER	AB TYPE	1式	
7	PRESSURE GAGE	DU TYPE	1式	
8	OIL HEATER	ELEC TYPE	1式	

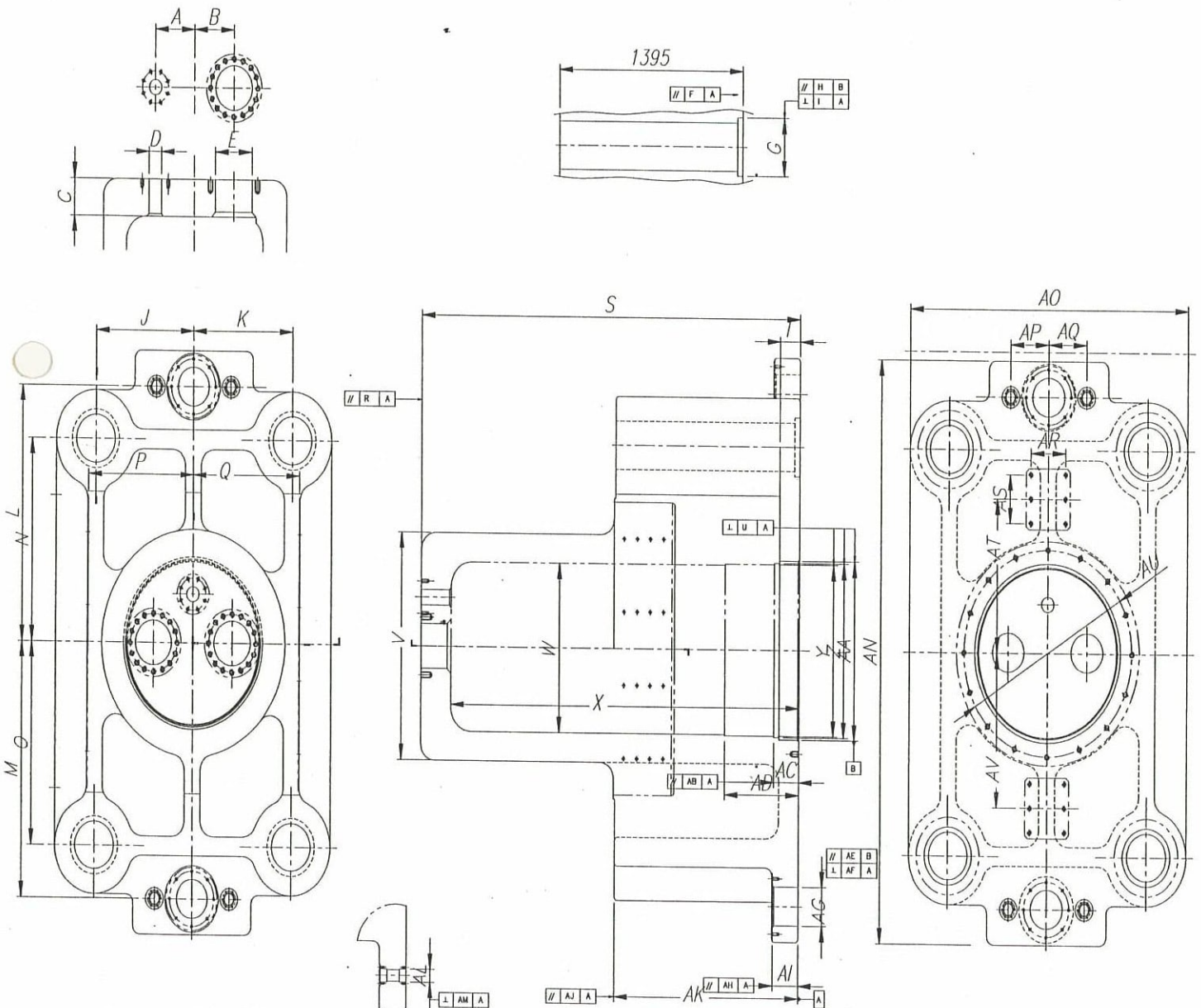
2.2 전장품

번호	항 목	사 양 / 형 식	수량	비 고
1	CONTROL BOX	PLC내장(LOADER 제외) 전류계, 전압계 부착 전동기 기동회로 부착 비상정지 BUTTON 부착	1式	
2	OPERATION PANEL	본체 외부 5M내 설치	1式	
3	전동기 기동장치	STAR-DELTA OR 직기동 방식	1式	
4	비상정지 SWITCH	LOCKING TYPE	1式	

PROJECT NAME	2000TON FORGING PRESS	MATERIAL	SC49
PROJECT NO.	PQ062	DRAWING NO.	F2000211-00a
ITEM NAME	CROWN FRAME	QUANTITY	1EA
MEASU'G EQUIP (DWG)	BORING M/C, C/G, V/C	INSP. DATE	2006 . 3 . 12 .

UNIT : mm

Crown Frame



ACCEPT O HOLD
 HYDROTEK REVIEWED
 0. 3. 12. WITNESSED
 Dae-Sung, HA



검 사 성 적 서 INSPECTION REPORT

PROJECT NAME	2000TON FORGING PRESS	MATERIAL	SC49
PROJECT NO.	PQ062	DRAWING NO.	F2000211-00a
ITEM NAME	CROWN FRAME	QUANTITY	1EA
MEASU'G EQUIP	BORING M/C, C/G, V/C	INSP. DATE	2006 . 3 . 12 .

CROWN FRAME

ITEM	A	B	C	D	E	F	G	H	I	J	K	L	M
SPEC.	300	300	230	Ø95	Ø275	//	Ø360	//	⊥	750	750	1575	1575
TOL.	± 0.1	± 0.1	± 0.2	± 0.1	± 0.1	0.1	+ 0.15 + 0.05	0.1	0.1	± 0.05	± 0.05	± 0.05	± 0.05
NO.1	+0.04	+0.01	-0.03	+0.02	+0.01	0.02	+0.12	0.03	0.02	+0.02	-0.01	-0.01	-0.03
ITEM	N	O	P	Q	R	S	T	U	V	W	X	Y	Z
SPEC.	1250	1250	805	805	//	2880	150	⊥	Ø1400	Ø1040	2650	Ø1055	Ø1070
TOL.	± 0.05	± 0.05	± 0.1	± 0.1	0.1	± 1	+ 0.1 0.0	0.1	± 0.8	± 0.5	± 0.8	+ 0.165 0.0	+ 0.165 0.0
NO.1	+0.01	-0.02	+0.05	+0.03	0.00	+0.6	+0.04	0.03	-	-	+0.3	+0.11	+0.09
ITEM	AA	AB	AC	AD	AE	AF	AG	AH	AI	AJ	AK	AL	AM
SPEC.	Ø1100	//	190	560	//	⊥	Ø240	//	195	//	1395	Ø80	⊥
TOL.	+ 0.165 0.0	0.1	+ 0.1 0.0	± 0.3	0.1	0.1	+ 0.2 + 0.1	0.1	± 0.2	0.1	± 0.8	+ 0.15 + 0.05	0.1
NO.1	+0.00	0.04	+0.01	-0.2	0.01	0.03	+0.16	0.01	-0.15	0.05	+0.2	+0.00	0.02
ITEM	AN	AO	AP	AQ	AR	AS	AT	AU	AV				
SPEC.	3590	2100	285	285	260	300	950	B.C.D Ø1270	950				
TOL.	± 1	± 0.8	± 0.05	± 0.05	± 0.1	± 0.1	± 0.1	± 0.5	± 0.1				
NO.1	-0.5	+0.2	+0.01	-0.02	+0.05	-0.1	+0.1	+0.3	-0.05				

NOTE:		INSPECTER		REVIEWED BY	
	Q.A	ENGINEER		WITNESSED BY	
		MANAGER			

ACCEPT HOLD
 HYDROTEK REVIEWED
 0.3.12 WITNESSED
 Dae-Sung, HA *[Signature]*