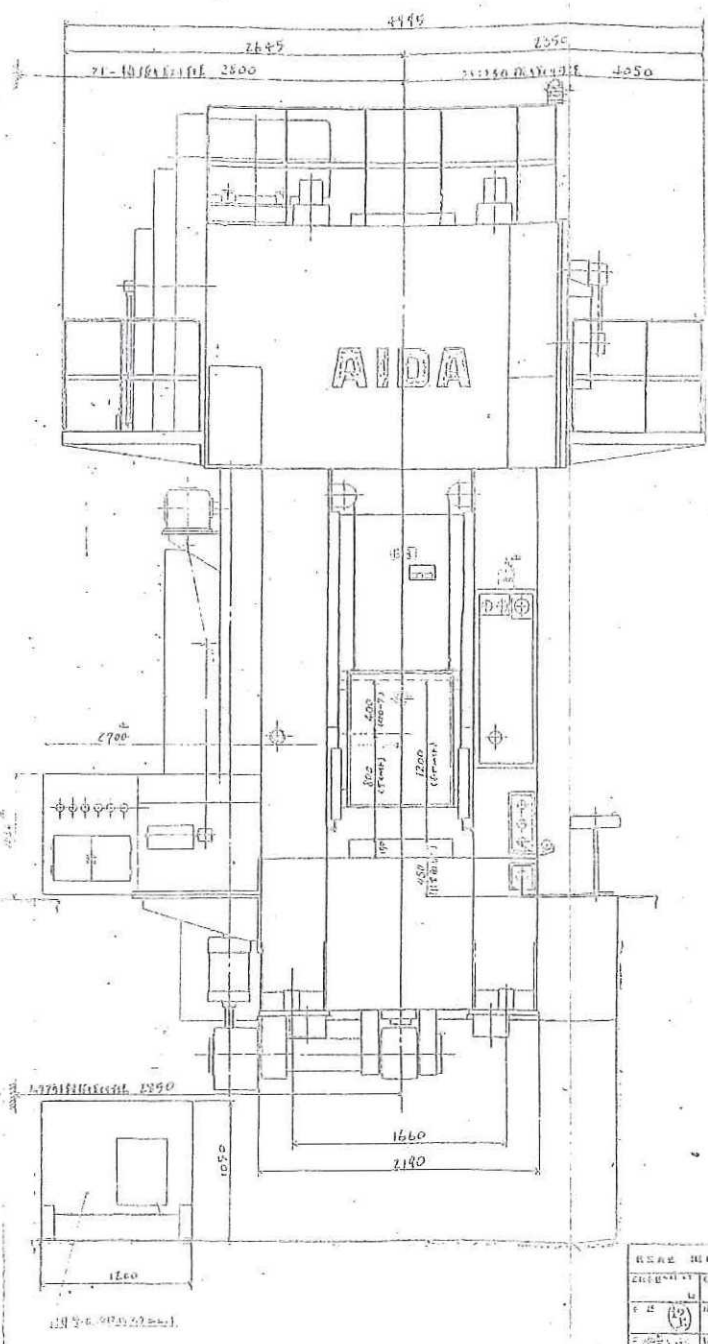
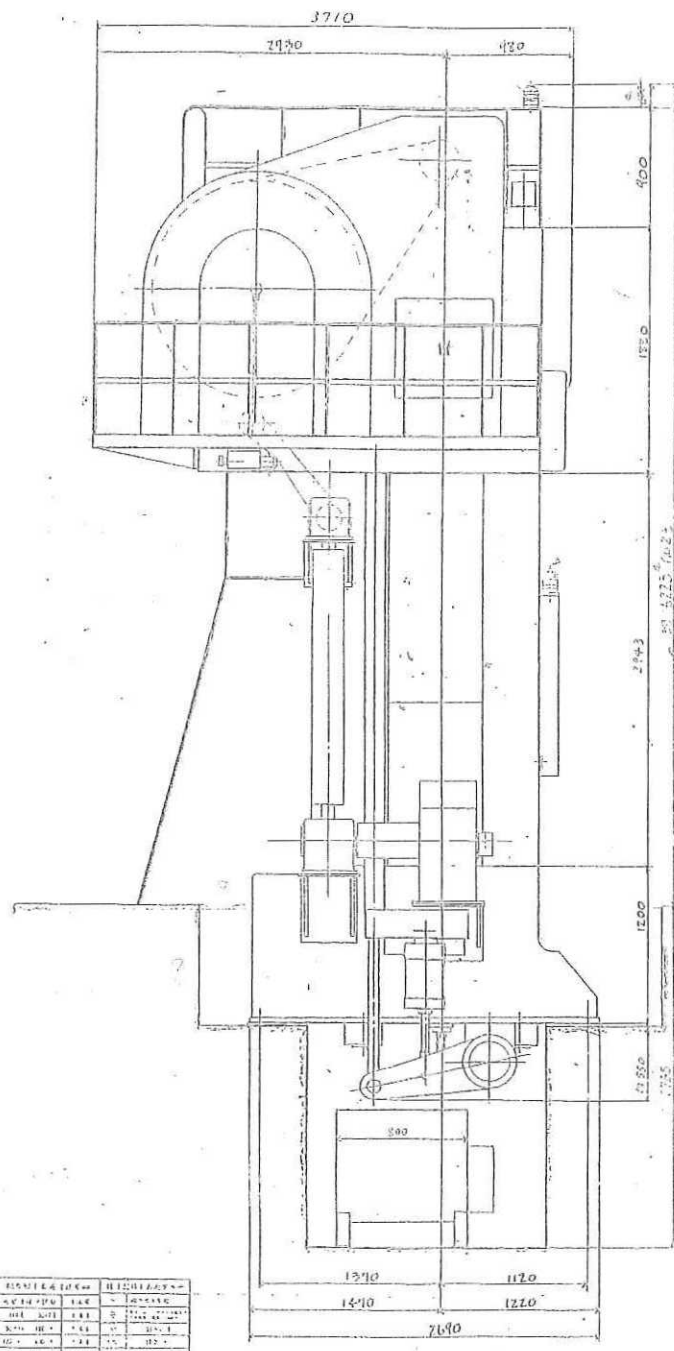


No. 2-630c



SPECIFICATIONS	
MODEL NUMBER	CF1-63
CAPACITY	630
STROKE PER MINUTE (MAXIMUM)	15-25
STROKE PER MINUTE (NORMAL)	10 (25% 1/4)
STROKE LENGTH	400
STROKE ADJUST	50
STROKE AREA (C.R. x F.P.)	800 x 1050
POLYMER AREA (C.R. x F.P.)	800 x 1050
POLLITER THICKNESS	150
DIE HEIGHT	800
MAXIMUM AIR PRESSURE	5
NUMBER OF DIES CAPACITY (CONTAINER)	10

SPECIFICATIONS	
CAPACITY	30
STROKE LENGTH	120
DIE POLLITER CAPACITY	1 5/8 (2.5)

SPECIFICATIONS	
CAPACITY	3
DIE TYPICAL DIRECTION	1/2

SPECIFICATIONS	
CAPACITY	10
STROKE LENGTH	50
METHOD	空油式

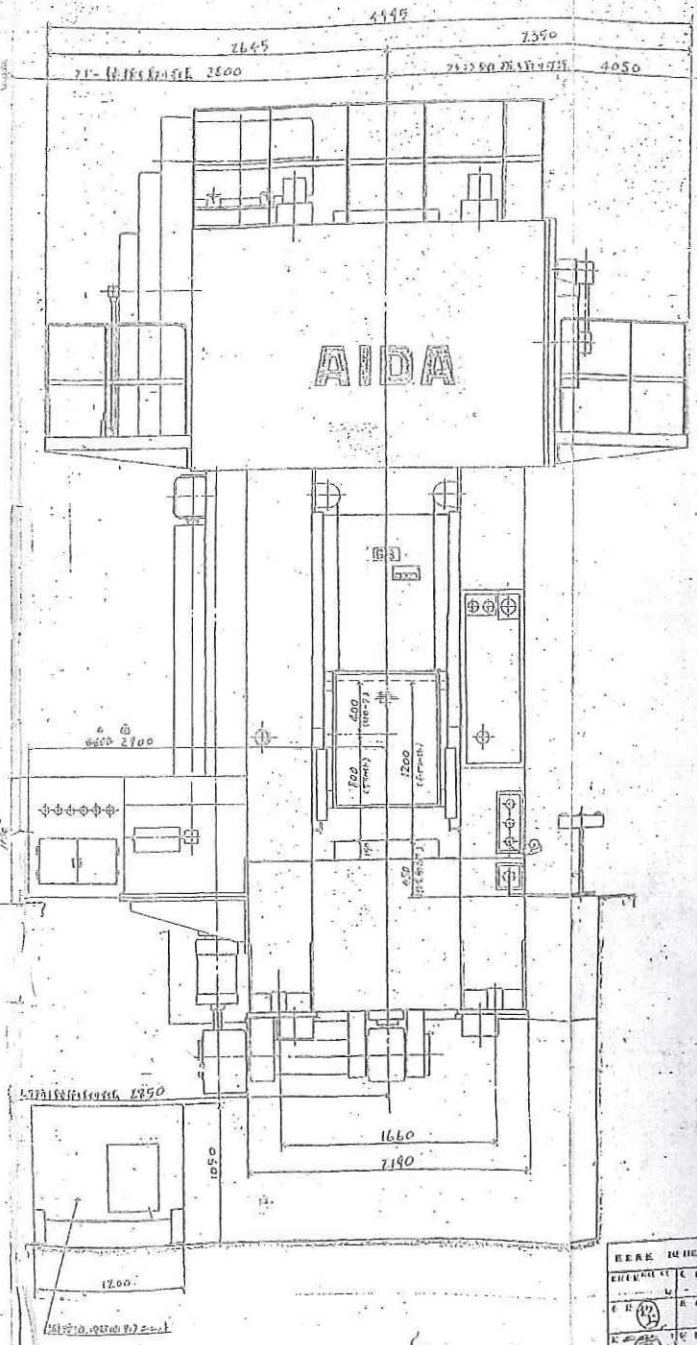
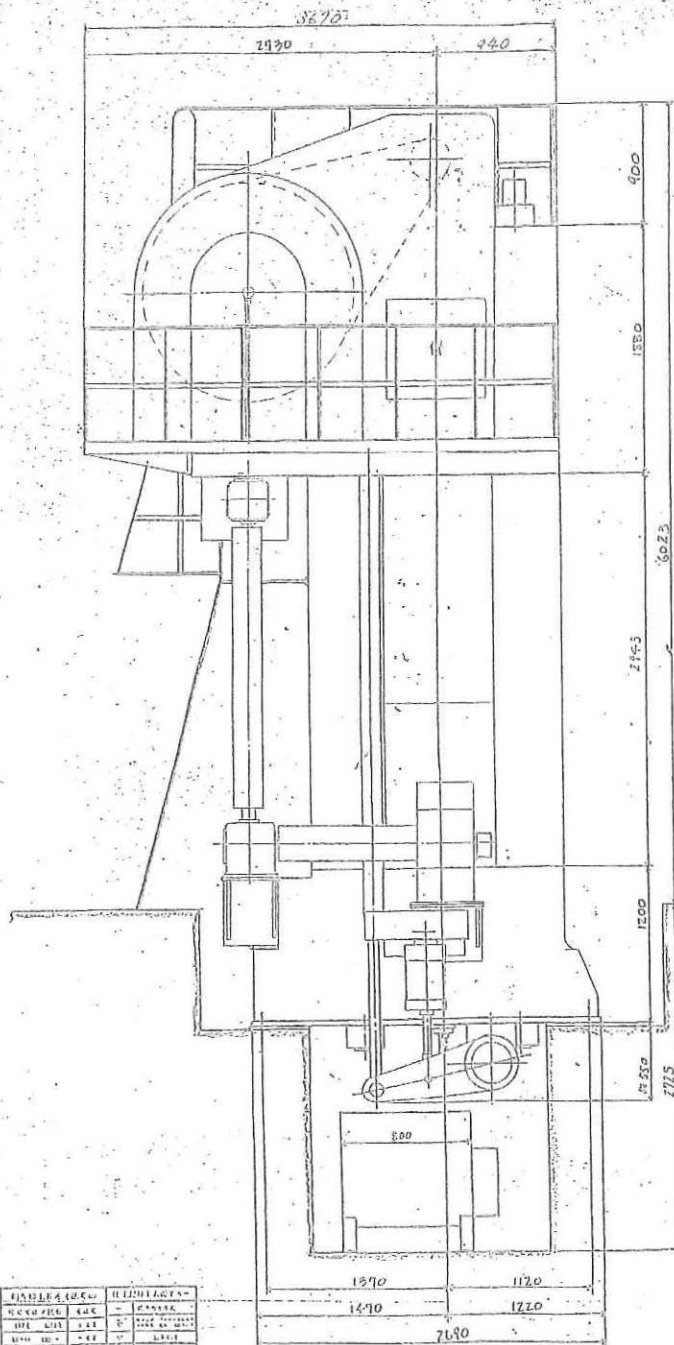
UPPER DIE CLAMPER CAPACITY	4
LOWER DIE CLAMPER CAPACITY	10

ISO

ITEM NO.	DESCRIPTION	QTY	UNIT
1
2
3
4
5

ITEM NO.	DESCRIPTION	QTY	UNIT
1	CF1-63	1	UNIT
2	GENERAL VIEW	1	UNIT
3

No. 3-630E



SPECIFICATIONS	
MODEL NUMBER	CFI-63
CAPACITY	630
SLIDE LENGTH	15-25
SLIDE AREA (CL. 10)	10 (1500x150)
SLIDE AREA (CL. 15)	10 (1500x150)
SLIDE AREA (CL. 20)	10 (1500x150)
SLIDE AREA (CL. 25)	10 (1500x150)
SLIDE AREA (CL. 30)	10 (1500x150)
SLIDE AREA (CL. 35)	10 (1500x150)
SLIDE AREA (CL. 40)	10 (1500x150)
SLIDE AREA (CL. 45)	10 (1500x150)
SLIDE AREA (CL. 50)	10 (1500x150)
SLIDE AREA (CL. 55)	10 (1500x150)
SLIDE AREA (CL. 60)	10 (1500x150)
SLIDE AREA (CL. 65)	10 (1500x150)
SLIDE AREA (CL. 70)	10 (1500x150)
SLIDE AREA (CL. 75)	10 (1500x150)
SLIDE AREA (CL. 80)	10 (1500x150)
SLIDE AREA (CL. 85)	10 (1500x150)
SLIDE AREA (CL. 90)	10 (1500x150)
SLIDE AREA (CL. 95)	10 (1500x150)
SLIDE AREA (CL. 100)	10 (1500x150)

FOR BROODER SPECIFICATIONS	
CAPACITY	30
SLIDE LENGTH	12.0
DE FILTER CAPACITY	1 (1500x150)

THE LIFTER SPECIFICATIONS	
CAPACITY	3
THE SPREAD POSITION	18

SLIDE MECH. SPECIFICATIONS	
CAPACITY	10
SLIDE LENGTH	50
METHOD	2-10/16"

VIB. DECLASS. CAPACITY	4 x 4"
LOGIC DECLASSIFICATION	10-4"

150

NO.	REVISION	DATE	BY	CHKD.
1				
2				
3				
4				
5				

NO.	REVISION	DATE	BY	CHKD.
1				
2				
3				
4				
5				

HERE IS THE PART

CFI-63

GENERAL VIEW

104-0544/

2-9001

1/1126-0025